

September 24, 2024



PANHANDLE PARTNERSHIP

Rooted in Frontier Spirit, Committed to the Future

Panhandle Partnership
Website

Training Events
Calendar

This email includes curated content originally created by our friends at member and partner organizations, both locally and nationally. If you have an update, event, or news article you would like to see featured in an upcoming Tuesday Update, please email info@panhandlepartnership.com

Panhandle Partnership Annual Meeting

Join us on October 4th from 9:00 - 1:00 p.m. at ESU-13 for our Annual Membership Meeting. Lunch will be provided!

Please register by clicking the button below. We look forward to seeing you!

Register Here



**REGION 1 BEHAVIORAL HEALTH
AUTHORITY PRESENTS:
BEHAVIORAL THREAT
ASSESSMENT**

**For Law Enforcement & Emergency System Partners
ESU 13 | 4215 Ave. I Scottsbluff**


The Behavioral Threat Assessment Training educates officers and other emergency mental health partners, such as clinicians, case managers, and peers, on recognizing signs and symptoms of behavioral health crises and implementing safe and effective crisis intervention strategies. Additionally, participants will learn how to conduct a basic threat assessment and develop management strategies. This is free training. Contact Panhandle Partnership for registration information.

SEPTEMBER 25TH 2024 | 8:00 AM-12:30 PM

- Officer Resiliency
- Understanding Autism
- Substance Use and its effects on mental health

SEPTEMBER 26TH 2024 | 8:00 AM-4:00 PM

Dr. Mario Scalora (UNL Public Policy Center)

- Practical Behavioral Health Threat Assessment & Management
 - Recognizing the role of Extremism as a Justification for Violence
- 

[Register Here](#)

UNMC Olson Center for Women's Health and the Panhandle Public Health District present the **Panhandle Lunch and Learn**

Friday, Oct. 11, 2024 | 12 to 1 p.m. MT (1 to 2 p.m. CST)

Online only



Hot Flashes to Hormones: Understanding Menopause & Perimenopause for Healthy Aging

Presenter:

Jennifer Griffin Miller, MD, MPH
Associate Professor and Division Director
University of Nebraska Medical Center, Dept of Ob/Gyn
Omaha, NE

In a woman's life, the transition through perimenopause and menopause can cause many uncomfortable symptoms. Dr. Jennifer Griffin Miller of the University of Nebraska Medical Center Department of Ob/Gyn will describe how lifestyle, sleep, and nutrition can impact the symptoms of menopause and what treatment options, including pharmaceuticals, may be recommended.

Please pre-register by emailing the Olson Center for Women's Health at OlsonWHRC@unmc.edu. Viewing directions will be given to registrants prior to the Lunch and Learn presentation.

This lecture is free, however if you would like to obtain nursing credit, the cost is \$15. Payment instructions will be given when you pre-register. **Nursing credit can only be obtained for watching the live stream of the virtual presentation, not for viewing the recording after the event.**



JOINTLY ACCREDITED PROVIDER™
INTERPROFESSIONAL CONTINUING EDUCATION

In support of improving patient care, this activity has been planned and implemented by University of Nebraska Medical Center and Olson Center for Women's Health. University of Nebraska Medical Center is jointly accredited by the Accreditation Council for Continuing Medical Education (ACCME), the Accreditation Council for Pharmacy Education (ACPE), and the American Nurses Credentialing Center (ANCC), to provide continuing education for the healthcare team.

The University of Nebraska Medical Center designates this activity for 1.0 ANCC contact hours. Nurses should only claim credit for the actual time spent participating in this activity.

Course ID: 24OL00110



NJJA | Nebraska Juvenile Justice Association

In-Person
Seminar

**Building Resiliency Through Community Support,
Hope and Resources; Healing Trauma and Addiction**

Oct. 29, 2024, 9am-4pm (MDT)

Gering Civic Center, Gering, NE

Save the Date

Building Resiliency Through Community Support, Hope and Resources; Healing Trauma and Addiction

When: October 29, 2024

9:00am - 4:00pm Mountain Time (US and Canada)

Please join us for an all-day training event to hear personal stories of the impact of Opioid and other drug misuse. This training will enhance support for family members suffering from trauma as a result of addiction in the family.

Learn how communities can work together to provide support in the recovery process and ways to support the mental health needs of young people who

process and ways to support the mental health needs of young people who may be at risk of misusing opioids or other drugs. Education regarding access to naloxone will be included.

This training is provided through a collaboration of NJJA, Panhandle Partnership, and Community Connections.

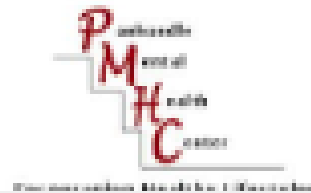
NJJA



PANHANDLE
PARTNERSHIP
Rooted in Tradition. Committed to the Future.



These materials were funded in whole or in part by the Opioid Settlement Funds Grant through Region 1 Behavioral Health Authority and PMHC Foundation.



Member Updates

Nebraska Children and Families Foundation

We're excited to share that a new job posting is now live for the Panhandle Extension Assistant. The person who fills this position will focus their time supporting Afterschool Programs in the Panhandle!

Job posting is linked [here](#).

Snowy Peak Community Services



All parents wonder if they're getting it right.

You're not alone. Sometimes it's hard to tell what your child needs, what her behaviors mean and if you're doing right by him. Imagine what it might feel like if you could make sense of what your child is really asking from you.

Circle of Security™ Parenting is an opportunity to join other parents just like you, for an 8-week class where you'll learn to:

- Strengthen your relationship with your child
- Be present with your child during the best and toughest of times
- Recognize your child's needs and make sense of his or her behavior
- Meet your child's needs by being bigger, stronger, wiser and kind

Who should attend: Parents, grandparents, child care providers, teachers, and foster providers

Location: Virtual via Zoom; Monday's for 8 weeks

Dates: October 28th- December 16th, 2024

Times: 5-7p.m. MT/ 6-8 CT

Cost: Free

How to register: <https://www.necosp.org/events/circle-security-parenting-virtual>

Presented by: Kate Batt

Sponsored by:

[Download PCIT Brochure](#)

Healthy Families

September & October 2024 Newsletter

IF YOU READ THIS, TELL YOUR HOME VISITOR AND YOU'LL EARN \$2 BABY BUCKS!

GET YOUR VACCINES



Back to School & Cold and Flu Season means it's time to think about getting you and your children vaccinated.

Routine vaccinations for infants, children, and teens, flu shots, and COVID vaccines are all available at Panhandle Public Health District (PPHD).

PPHD offers walk-in immunizations Tuesday - Friday, 8:30 a.m. - 4:00 p.m. at 18 W 16th St. Scottsbluff, NE. You can also call to schedule an appointment: **308.633.2866**.

DAD'S CORNER



I like how informative this program is. I also like that our home visitor is always there when she says she will be. Even if we have a question between visits, we can text her and get an answer back right away.

FINE MOTOR PINECONE ACTIVITY!

You Will Need:

- pinecones
- washable tempera paint
- paint brushes



Take your toddler out on a nature walk to collect pinecones for this activity.

Talk to them about what they see, what they smell, what they hear, and what they feel, while you are out on your walk.

After you've collected your pine cones, you can start painting them.

Pour some paint into containers, such as a paper bowl or plate, and place them on a table, along with the brushes and the pinecones.

Encourage your toddlers to paint the pinecones!

Talk to them about the colors they are using, as this is a great way to teach them what the different colors are.

91 Enrolled Families!!
Accepting Referrals from prenatal up to infants 3 months of age.

If you are interested in more information, call or text (308)765-5249 or email dbrandt@pphd.ne.gov

Scan here to make a referral!

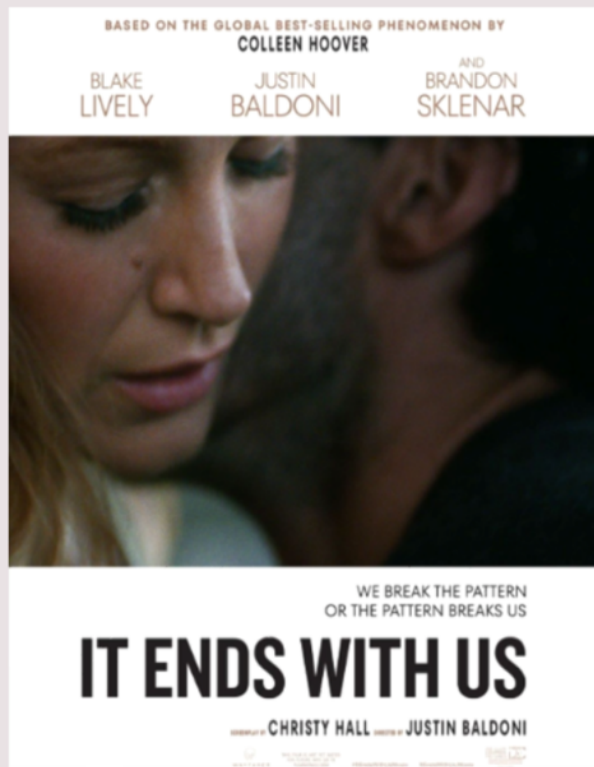
*You can self-refer!



[Download in English](#)

[Download in Spanish](#)

Doves



The DOVES Program
Board of Directors
proudly sponsors
"It Ends With Us"

SHOW TIMES

Friday October 4th
1:30p & 7:00p
Saturday, October 5th
7:00 PM
Sunday, October 6th
1:30 PM

"It Ends With Us" stars Blake Lively as Lily Bloom, a woman who overcomes a traumatic childhood to forge a new life in Boston. Falling in love seems to answer all her dreams, until her new partner begins to abuse her. This film explores the cycle of violence and the strength it takes to break it.

ADMISSION

Midwest Theater
Members \$4
Non members \$8



24-hour Helpline: 866-95-DOVES
24-hour Text Line: 515-599-6620
www.DOVESProgram.com

**Sexual, Domestic & Dating Violence
Services & Prevention**



Embracing
45 YEARS
of courage

OCTOBER

TUESDAY

08

4PM-6PM

1321 BROADWAY, SCOTTSBLUFF, NE

The DOVES Program invites you to an open house celebrating 45 years of courage, resilience, and strength.

Highlights:

- Ribbon-cutting at 4:30
- New office tour
- Refreshments and great conversation

Sexual, Domestic & Dating Violence
Services & Prevention
24-hour Helpline: 866-95-DOVES
24-hour Text Line: 515-599-6620



Panhandle Public Health District

Join us for a CALM training on September 25th from 12-1 pm MT via ZOOM!
Register [here](#)

Many people at risk for suicide never seek formal help. CALM workshops can be implemented by anyone concerned about someone at risk. These workshops offer practical techniques for those frequently in contact with individuals in distress, such as defense attorneys, bartenders, and teachers of court-ordered classes.

Please reach out to Nicole at nberosek@pphd.ne.gov with questions or comments!

CALM



COUNSELING
ON ACCESS TO
LETHAL MEANS

COUNSELING ON ACCESS TO LETHAL MEANS

Many people at risk for suicide never seek formal help. CALM workshops can be implemented by anyone concerned about someone at risk. These workshops offer practical techniques for those frequently in contact with individuals in distress, such as defense attorneys, bartenders, and teachers of court-ordered classes.



September 25 at 12 pm
via ZOOM

<https://tinyurl.com/yx5f3h3x>

*Register
Now*



CALM Conversations Quick Reference

Recognize Warning Signs



Ask about Mood and Suicide



Connect the Person to Support



**Focus on Increasing Safety of
Firearm & Medication Storage**



CONTACT US



Proudly part of

Panhandle

Public Health District

Call Us



308-279-3496



Visit Our Website

<https://www.pphd.ne.gov>



Contact

Nicole Berosek

nberosek@pphd.ne.gov

This project is funded 100% from the Strategic Prevention Framework- Partnerships for Success grant (1H79SP083671-01) through the Substance Abuse and Mental Health Services Administration, contracted through the Nebraska Department of Health and Human Services, Division of Behavioral Health.

BREAST cancer

AWARENESS MONTH

Breast cancer is the most common cancer found in women, regardless of race or ethnicity.

Early detection saves lives!



Empowering Families

Empowering Families would like to invite you to our very first Sip & Support Fundraiser. Join us in closing out this Hispanic Heritage Month by funding the future of Empowering Families, a Hispanic-led organization serving the Panhandle of Nebraska through education, civic participation, and bridge-building.

Tickets can be purchased [here](#).

SIP & SUPPORT FUNDRAISER



EMPOWERING FAMILIES

\$40
Ticket



Fri, Oct 18
6-8:30PM
A Venue Off
Broadway



Register Here!

Learn about our impactful work plus

3 Sample Tasting of Hispanic Wines | Cash Bar
Hispanic Themed Charcuterie | Silent Auction

TRAGOS & APOYO

RECAUDACIÓN DE
FONDOS



EMPOWERING FAMILIES

Boleto
de \$40



viernes, 18 de
octubre
6-8:30 p.m.
A Venue Off
Broadway



Regístrese Aquí

Conozca más sobre nuestro trabajo impactante y más
3 muestras de de vinos hispanos | Charcutería hispano
| Barra | Subasta de objetos donados

1517 Broadway Suite 106 None | Scottsbluff, NE 69361 US

This email was sent to .

To continue receiving our emails, add us to your address book.

[Subscribe](#) to our email list.